

YC148-61

WR-15 Y-junction circulator



MicroHarmonics

Superior mm-Wave Components

58-64 GHz Bandwidth

Specifications

Flange	WR-15 UG-385/U
Frequency (GHz)	58-64
Insertion Loss (dB, avg)	0.3
Insertion Loss (dB, max)	0.8
Isolation (dB, min)	18
Return Loss (dB, typ min)	19
VSWR (typ max)	1.25:1
Maximum Power (W)	3.0

WR-15 Y-Junction Circulator

Y-junction circulators are a good solution in applications with moderate to low bandwidth requirements. Peak isolation and minimum port reflections naturally occur in the same part of the band yielding optimum performance.

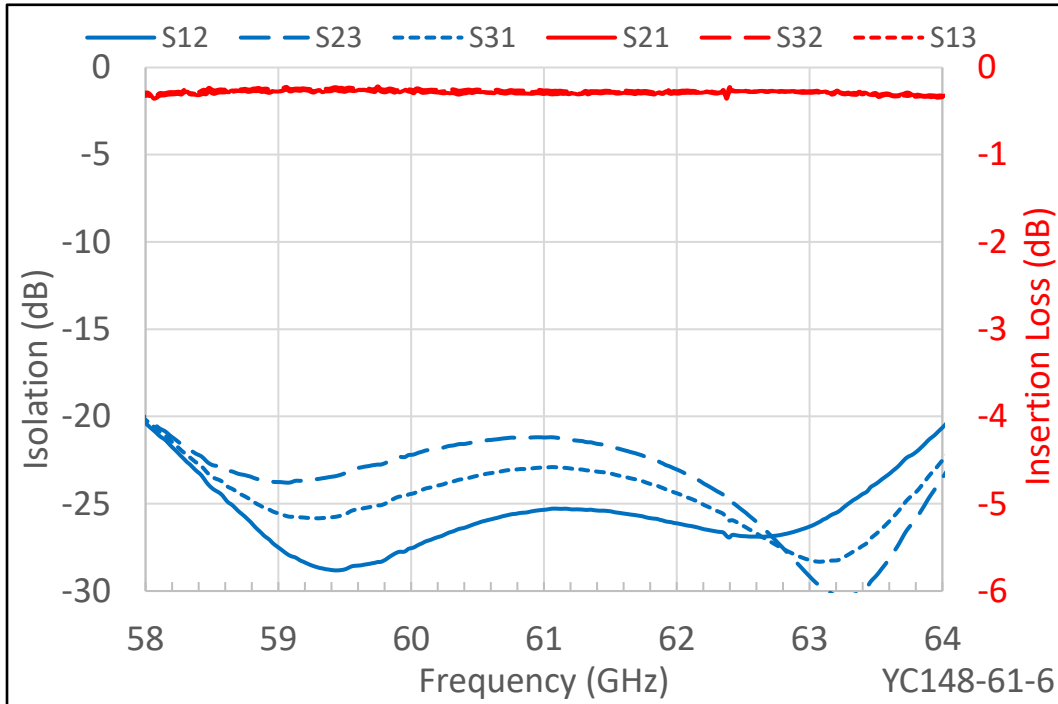
All impedance matching is done through precision machining of the internal waveguide structures. No complicated dielectric elements are used. This approach yields a more repeatable and symmetric response between the three circulator ports. The three ports are equidistant from the ferrite disc.

- ◆ **Widest bandwidth for Y-junction**
- ◆ **Internal waveguide screw access**
- ◆ **Anti-cocking waveguide flanges**
- ◆ **Compact, light-weight design**
- ◆ **Resists stray magnetic fields**
- ◆ **Comprehensive test data**
- ◆ **Low insertion loss**

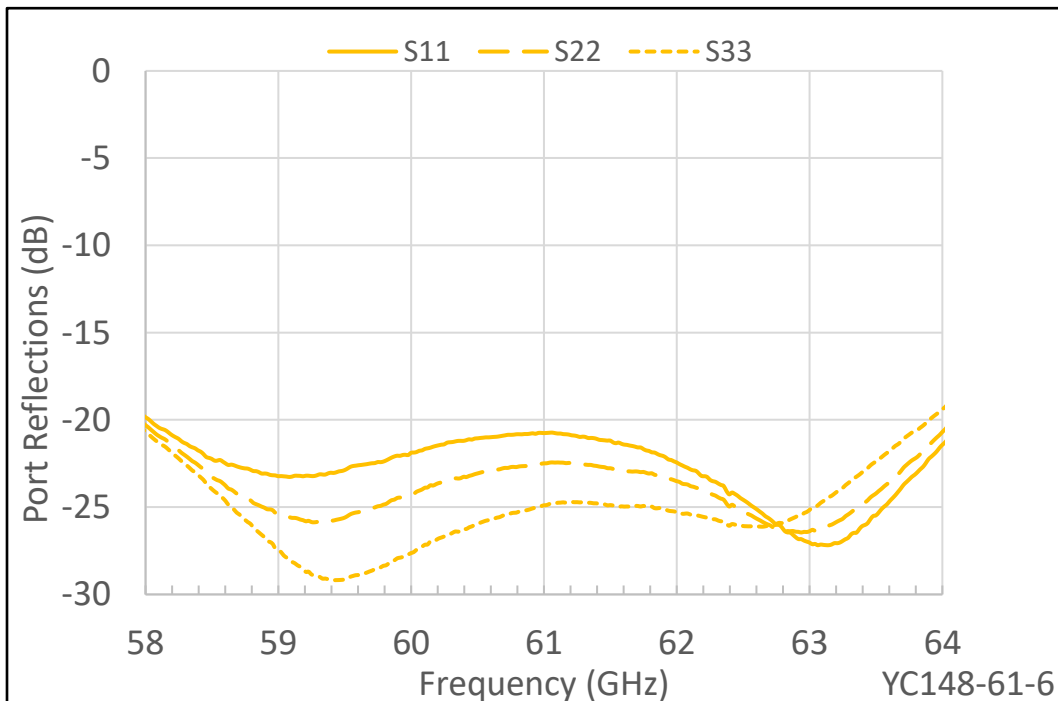




Insertion Loss and Isolation

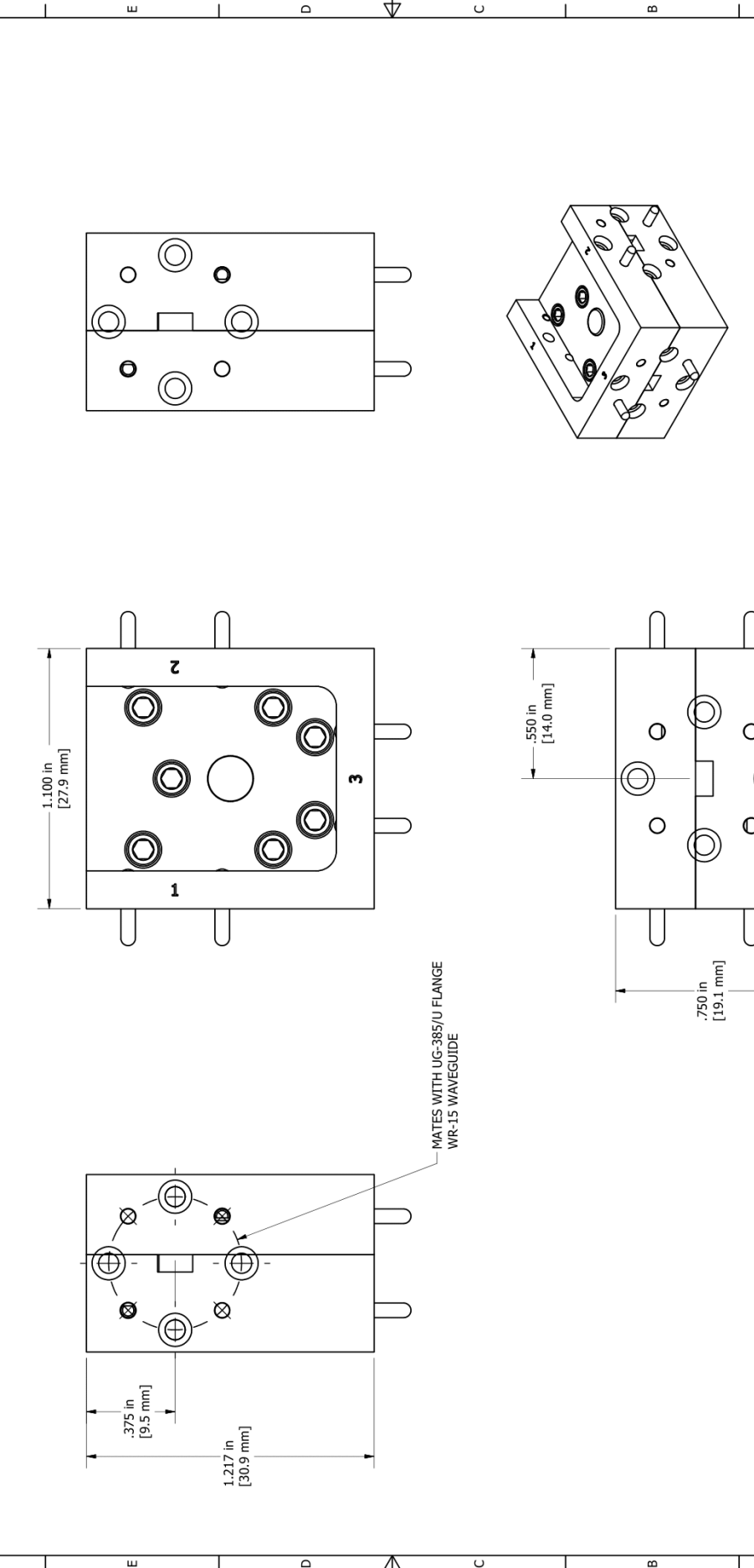


Port Reflections



F	Proprietary - Micro Harmonics Corporation		REVISION HISTORY		1		
	Date 9/13/2023		ZONE	REV	DESCRIPTION	DATE	APPROVED
				-	RELEASE TO CUSTOMER	10/3/23	MK

Micro Harmonics



PART NUMBER - DESCRIPTION		Micro Harmonics Corporation	
YC148-61 Dimension Drawing		20 S Roanoke St. Ste 202	
DWG. UNITS: DRAWN BY: SIZE: PAGE NUMBER:		Fincastle, VA 24090	
INCHES SCS B		ph. 540.473.9983	
APPROVAL		fax 844.449.1561	
		REV: 1	