

YC122-73

WR-12 Y-junction circulator



MicroHarmonics

Superior mm-Wave Components

71-76 GHz Bandwidth

Specifications

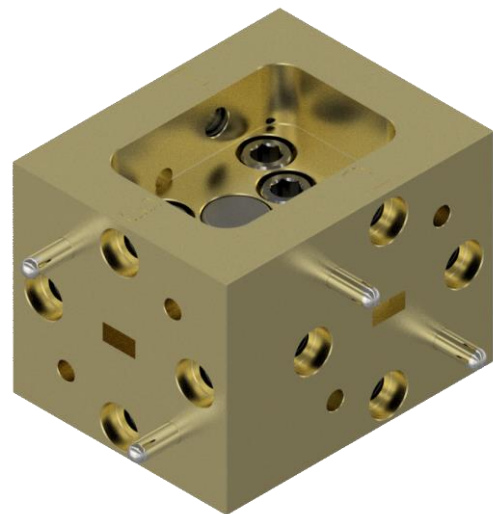
Flange	WR-12 UG-387/U
Frequency (GHz)	71-76
Insertion Loss (dB, avg)	0.4
Insertion Loss (dB, max)	0.7
Isolation (dB, min)	19
Return Loss (dB, typ min)	22
VSWR (typ max)	1.15:1
Maximum Power (W)	3.0

WR-12 Y-Junction Circulator

Y-junction circulators are a good solution in applications with moderate to low bandwidth requirements. Peak isolation and minimum port reflections naturally occur in the same part of the band yielding optimum performance.

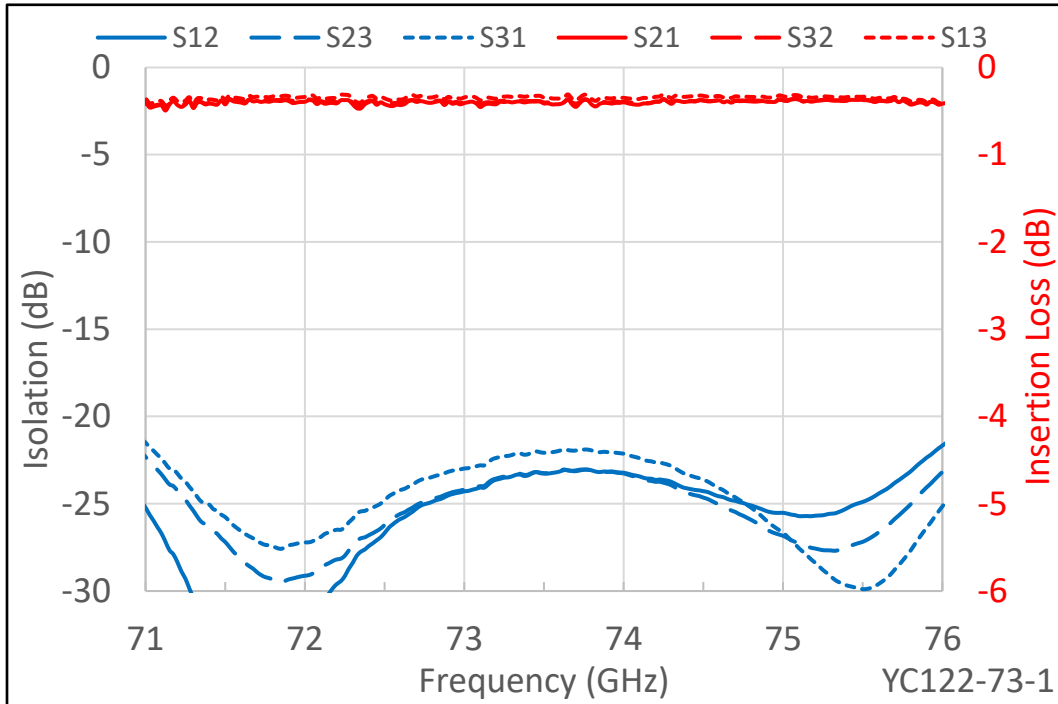
All impedance matching is done through precision machining of the internal waveguide structures. No complicated dielectric elements are used. This approach yields a more repeatable and symmetric response between the three circulator ports. The three ports are equidistant from the ferrite disc.

- ◆ **Widest bandwidth for Y-junction**
- ◆ **Internal waveguide screw access**
- ◆ **Anti-cocking waveguide flanges**
- ◆ **Compact, light-weight design**
- ◆ **Resists stray magnetic fields**
- ◆ **Comprehensive test data**
- ◆ **Low insertion loss**

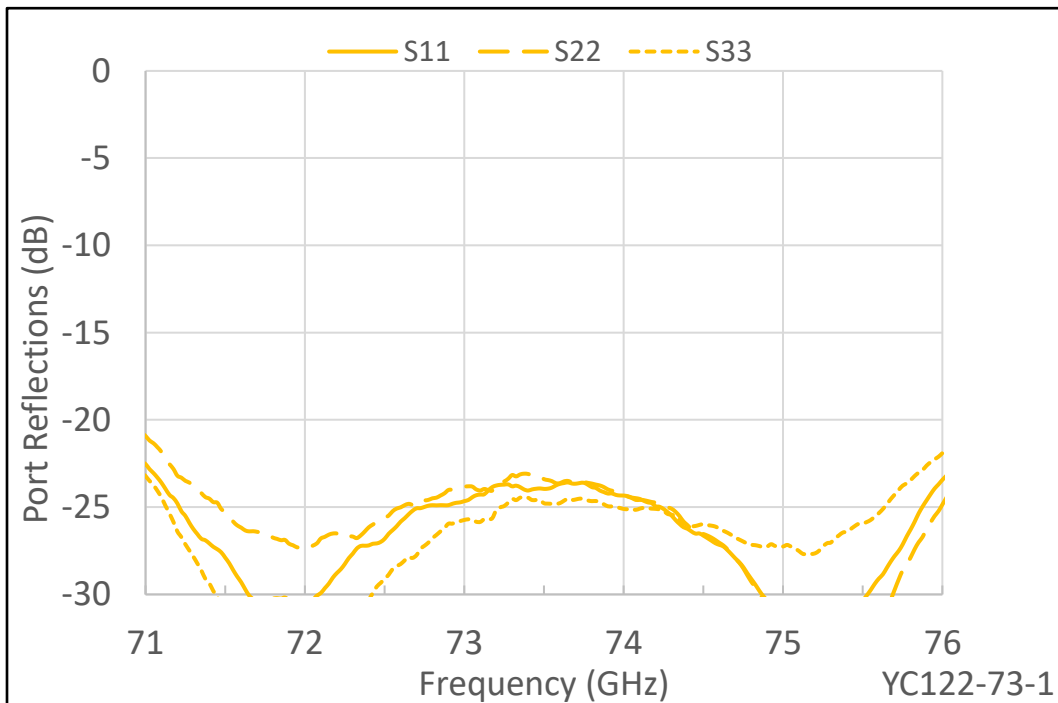




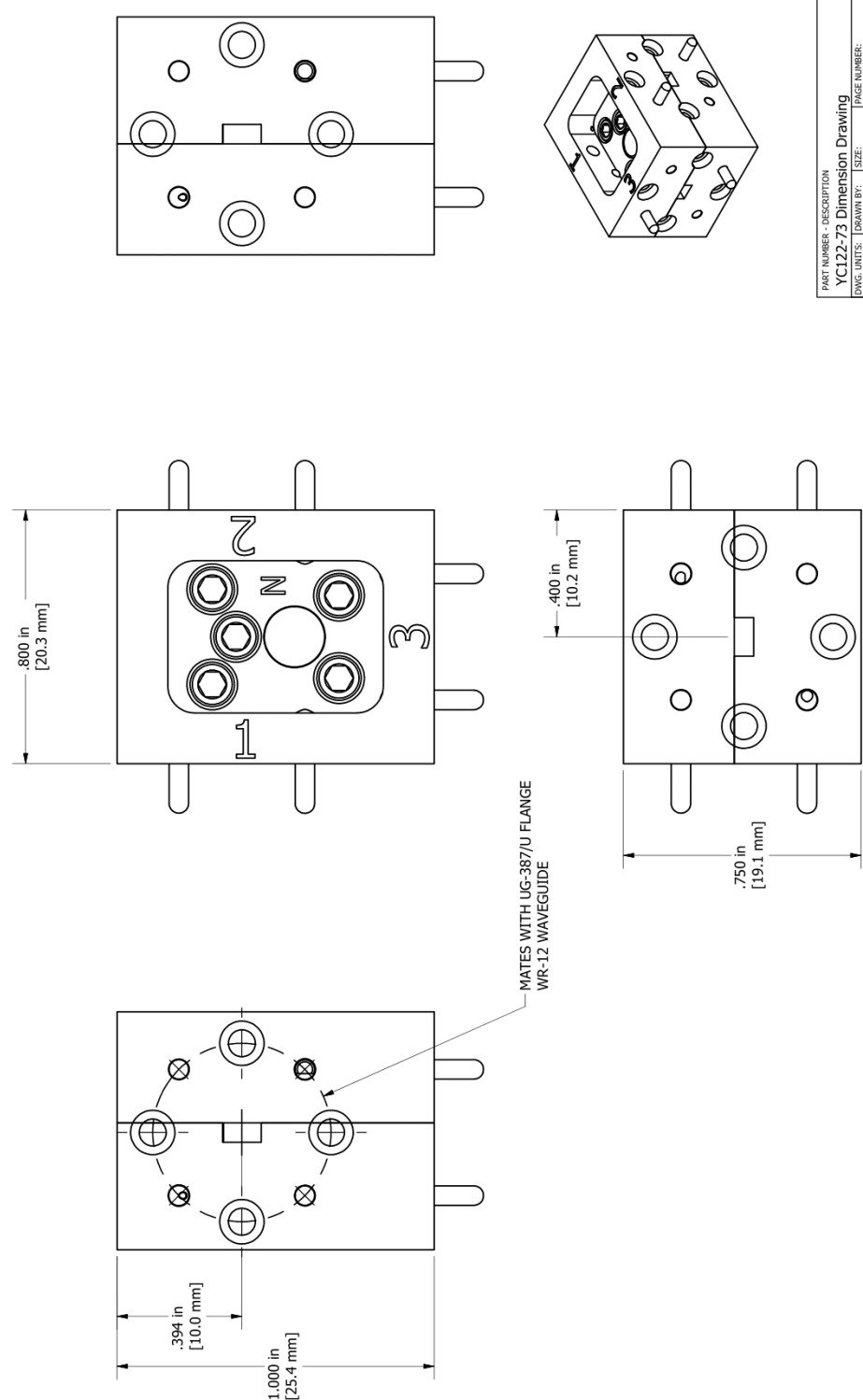
Insertion Loss and Isolation



Port Reflections



8	Micro Harmonics		Proprietary - Micro Harmonics Corporation		7	
	Date		9/13/2023			
5	ZONE		REV		4	
	-		-			
3			REVISION HISTORY			
2			DESCRIPTION			
1			RELEASE TO CUSTOMER			
			DATE		APPROVED	
			10/3/23		MK	



PART NUMBER - DESCRIPTION		Micro Harmonics Corporation	
YCI22-73 Dimension Drawing		20 S Roanoke St. Ste 202	
DWG. UNITS: INCHES		Fincastle, VA 24090	
DRAWN BY: SCS		ph. 540.473.9983	
SIZE: B		fax 844.449.1561	
PAGE NUMBER: 1 of 1		REV: 1	
APPROVAL			