

FR65-680

WR-6.5 waveguide isolator



MicroHarmonics

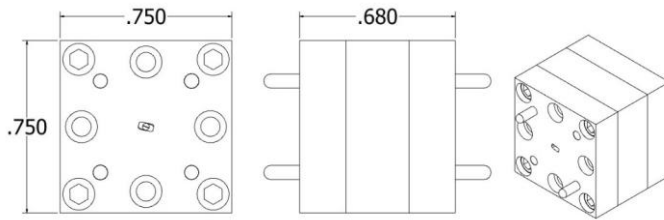
Superior mm-Wave Components

- ◆ Anti-cocking waveguide flanges
- ◆ Comprehensive test data
- ◆ Lowest insertion loss
- ◆ High isolation
- ◆ Compact size
- ◆ Diamond heatsinks
- ◆ Resist stray magnetic fields



Specifications

| | |
|--------------------------|---------------------|
| Flange | WR-6.5 UG-387/UM |
| Frequency (GHz) | 110-170 |
| Insertion Loss (dB, avg) | 0.9 |
| Insertion Loss (dB, max) | 1.9 |
| Isolation (dB, typ min) | 24 |
| Input RL (dB, typ min) | 19 |
| Output RL (dB, typ min) | 19 |
| VSWR (typ max) | 1.3:1 |
| Max Reverse Power (W) | 1.5 |
| Diamond Heatsink | Yes |



Every isolator is tested on a vector network analyzer to ensure conformity and the test data is provided.

